

**TMB** Baking  
EQUIPMENT

THE HEART OF ARTISAN BAKERIES™

# SMALLWARES CATALOG

## 2025



**About Us:** TMB Baking is a full-service baking equipment and accessories company serving the North American artisan bread and baked goods industry. Over the past 39 years, we have serviced our customers by providing process and layout consulting services; bakery equipment selection including accessories, spare parts, and smallwares; and installation and technical support to allow bakeries to grow and flourish.

Our Smallwares Catalog is only a fraction of the materials available. If you don't see what you need, please call us at (650) 589-5724 or send us an email at [smallwares@tmbbaking.com](mailto:smallwares@tmbbaking.com) with a photo or description of what you're seeking and we'll do our best to locate and quote the items you require.

Be sure to check out our wide range of bakery equipment, including deck ovens, rack ovens, retarder-proofers, spiral mixers, dividers, divider-rounders, baguette moulders, and other products.

Thank you for allowing us the opportunity to serve your bakery equipment, smallwares, accessories, consulting, and spare parts needs!

**NOTICE: Due to increased costs of packaging and labor, we are forced to implement a \$15 fee on any orders under \$50.**

**\*\*RETURN POLICY AND APPROXIMATE MEASUREMENTS ON MOST ITEMS ARE IN THE BACK**



# Table of Contents

<b>Product</b>	<b>Pages</b>
Proofing Baskets & Liners	4-9
Cutters & Scrapers	10-12
Oven Peels	13-15
Boards	16
Razor Blades & Lames	17-18
Containers	19-20
Linen Couche	21-22
Brushes & Brooms	23-26
Cutter & Dough Rollers	27-29
Stamps	31
Miscellaneous	32-33
Condensed Pricing List (with measurements)	34-37
Return Policy	38

# P R O O F I N G B A S K E T S



*Provide support and shape to your dough while  
it proofs in our baskets.*

---

# PROOFING BASKETS

## ROUND RATTAN LINEN LINED



Capacity: 1.5 lbs. (750 grams)

Dimensions: 8.5"

Price: \$11.00

Item #: TM701PT



Capacity: 2.5 lbs. (1130 grams)

Dimensions: 10.25"

Price: \$12.00

Item #: TM702PH



Capacity: 3.5lbs (1580 grams)

Dimensions: 12.25"

Price: \$13.00

Item #: TM703PH



Capacity: 2.20 lbs. (1000 grams)

Inside Dimensions: 11.5" (OD: 13")

Price: \$23.00

Item #: TM707

\*Rattan & coil baskets are handmade, therefore individual basket size may vary

# PROOFING BASKETS

## OVAL RATTAN LINEN LINED

Capacity: 1.5lbs (750 grams)  
Dimensions: ID: 12.5"  
Price: \$12.00  
Item #: TM711P



Capacity: 1.5-2lbs (900 grams)  
Dimensions: ID: 14"  
Price: \$12.65  
Item #: TM705P



Capacity: 2.5-3lbs (1360 grams)  
Dimensions: 17"  
Price: \$13.00  
Item #: TM704P



# PROOFING BASKETS

## ROUND WOODEN COILED



Capacity: 1.5 lbs. (750 grams)  
Inside Dimensions: 7.875" (OD: 8.5")  
Price: \$24.00  
Item #: BASKET-GX000200



Capacity: 2.20 lbs. (1000 grams)  
Inside Dimensions: 8.525" (OD: 9.25")  
Price: \$27.00  
Item #: BASKET-GX000220

## OPTIONAL LINEN LINERS



Capacity: 1.5 lbs.  
Price: \$13.00  
Item #: SWBASKET-LINERS  
Pairs Basket: GX000200



Capacity: 2.20 lbs.  
Price: \$14.00  
Item #: SWBASKET-LINERL  
Pairs Basket: GX000220

# PROOFING BASKETS

## OVAL WOODEN COILED



Capacity: 1lbs  
Dimensions: 7.875"  
Price: \$24.00  
Item #: BASKET-AO200140



Capacity: 1.5lbs  
Dimensions: 9.125"  
Price: \$25.00  
Item #: BASKET-AO240140



**Linen Liners available for \$16.00**  
Item #: SWBASKET-LINERO



Capacity: 1.5lbs  
Dimensions: 9.5"  
Price: \$11.00  
Item #: BASKET-CB105937



# PROOFING BASKETS

## PLASTIC



Capacity: 1-1.5lbs  
Inside Dimension: 7.865" (OD: 8.375")  
Price: \$24.00  
Item #: BASKET-GXK000200



Capacity: 2lbs  
Inside Dimension: 9.25" (OD: 9.625")  
Price: \$25.65  
Item #: SWSKET-GXK000230



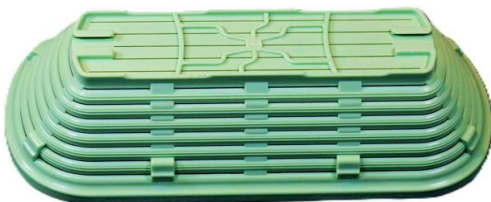
Capacity: 1lb  
Inside Dimension: 8.375" (OD: 8.75")  
Price: \$23.00  
Item #: BASKET-AOK210150



Capacity: 1-1.5lbs  
Inside Dimension: 9.875" (OD: 10.25")  
Price: \$24.00  
Item #: BASKET-AOK250150



Capacity: 1.5lbs  
Dimensions: 11.625" wide x 5" long  
Price: \$25.00  
Item #: BASKET-AXK290130



Capacity: 2lbs  
Dimensions: 13.38" wide x 5.5" long  
Price: \$26.50  
Item #: BASKET-AXK340140

# CUTTERS SCRAPERS

*Scrape your bowls and cut dough easily.*

---



# CUTTERS & SCRAPERS

## STAINLESS STEEL

---



Square Stainless Steel  
Price: \$15.00  
Item #: 1214.03



Round Stainless Steel  
Price: \$15.00  
Item #: 1216.03

## PLASTIC



Square Plastic With Plastic Handle  
Price: \$7.50  
Item #: SWSCRAPER-1211.33.00



Round Plastic With Plastic Handle  
Price: \$7.50  
Item #: SWSCRAPER-1212.33.00

# CUTTERS & SCRAPERS

---

Square Plastic  
Price: \$3.85  
Item #: SWSCRAPER-76736



Oval Plastic  
Price: \$3.85  
Item #: SWSCRAPER-76718



Trapezoidal Plastic in  
*White or Ivory*  
Price: \$5.00  
Item #: SWSCRAPER-76707



# PEELS HANDLES & BOARDS



---

*For the long and short of it.*

---

# PEELS

WITH HANDLE

Dimensions: 8" x 29.5", 6.5" Handle

Price: \$29.65

Item #: PEEL-83625



Dimensions: 18" x 36", 6.5" Handle

Price: \$34.50

Item #: PEEL-183625



Dimensions: 22" x 36", 6.5" Handle

Price: \$36.50

Item #: PEEL-223625



Dimensions: 14" x 16", 20" Handle

Price: \$25.00

Item #: PEEL-143628



---

# PEELS

## WITHOUT HANDLE

Overall Dimensions: 8" x 36", No Handle

Price: \$26.95

Item #: PEEL-83615



Overall Dimensions: 18" x 36", No Handle

Price: \$35.00

Item #: PEEL-183615



Overall Dimensions: 22" x 36", No Handle

Price: \$37.50

Item #: PEEL-223615



---

OPTIONAL: Handle/Pole (Includes a set of 2 hardware)

Length: 3ft

Price: \$15.65

Item #: PEEL-315

Length: 8ft

Price: \$20.00

Item #: PEEL-815



# BOARDS

---



Baguette Peel, 27x4 inches

Price: \$16.00

Item #: BOARD-00053



Wooden Proofing Board, 18x26 inches

Price: \$19.25

Item #: BOARD-ADD00133



# BLADES & LAMES

---

*You score, YOU win!*



# RAZOR BLADES

## & ACCESSORIES

---

### 10-Pack of Razor Blades

Price: \$5.50

Item #: SWBLADE-6001390002



### Case 250-Count Box of Razor Blades

Price: \$50.00

Item #: SWBLADE-6001390001



### Medium Ball Stainless Steel Lame

4.5"L x **3/16"** Handle Thickness

Price: \$7.50

Item #: SWBLADE-0012

### Large Ball Stainless Steel Blade Lame

4.5"L x **1/4"** Handle Thickness

Price: \$7.50

Item #: SWBLADE-0013



### Lame With Attached Plastic Holder

Price: \$9.00

Item #: SWBLADE-1092.03.05



# C O N T A I N E R S

*For all your proofing and storage needs.*



# CONTAINERS

---

## & LIDS



Ingredient Container in White  
Capacity: 50lbs.  
Price: \$39.00  
Item #: BAC008



LID for Ingredient Container in Ivory  
Price: \$27.00  
Item #: BAC008CI



Bus Tub  
Capacity: 20lbs.  
Price: \$15.00  
Item #: 152705



LID for Tubs  
Price: \$13.50  
Item #: 152205

# L I N E N



*Perfect support for your baguettes.*

---

# L I N E N   C O U C H E

---



Available in the following lengths:

Length	Item #	Price
Yard of 18" Width	SWLINEN-18INCH	\$11.50
Yard of 26" Width	SWLINEN-26INCH	\$13.50
Yard of 31" Width	SWLINEN-31INCH	\$14.25

**Rolls (50 yards per roll) are available and discounted 5% at checkout.**

Linen can be cut and serge seam finished for quantity orders.

Please contact TMB Baking at [smallwares@tmbbaking.com](mailto:smallwares@tmbbaking.com)

# B R O O M S

*Keep your space clean, easily.*

---



# OVEN BROOMS

---

Length: 16"

Price: \$48.50

Item #: BRUSH-403016

*\*\*Handle sold separately*



Length: 20"

**Requires Hardware**

Price: \$48.00

Item #: BRUSH-1565



Length: 24"

Price: \$59.00

Item #: BRUSH-403024

*\*\*Handle sold separately*



Length: 51"

Brush with handle

Price: \$45

Item #: BRUSH-B370





# FLOUR BROOMS

---

Counter Flour Light Bristle Brush

Price: \$22.00

Item #: SWBRUSH-8301



Counter Flour Dark Bristle Brush

Price: \$22.00

Item #: SWBRUSH-8302



---

## BRUSH

Grey Bristle Brush with Handle

Price: \$15.00

Item #: SWBRUSH-6432



---

# B R O O M

# A C C E S S O R I E S



Hardware for BRUSH-1565  
Price: \$15.00  
Item #: BRUSH-1500



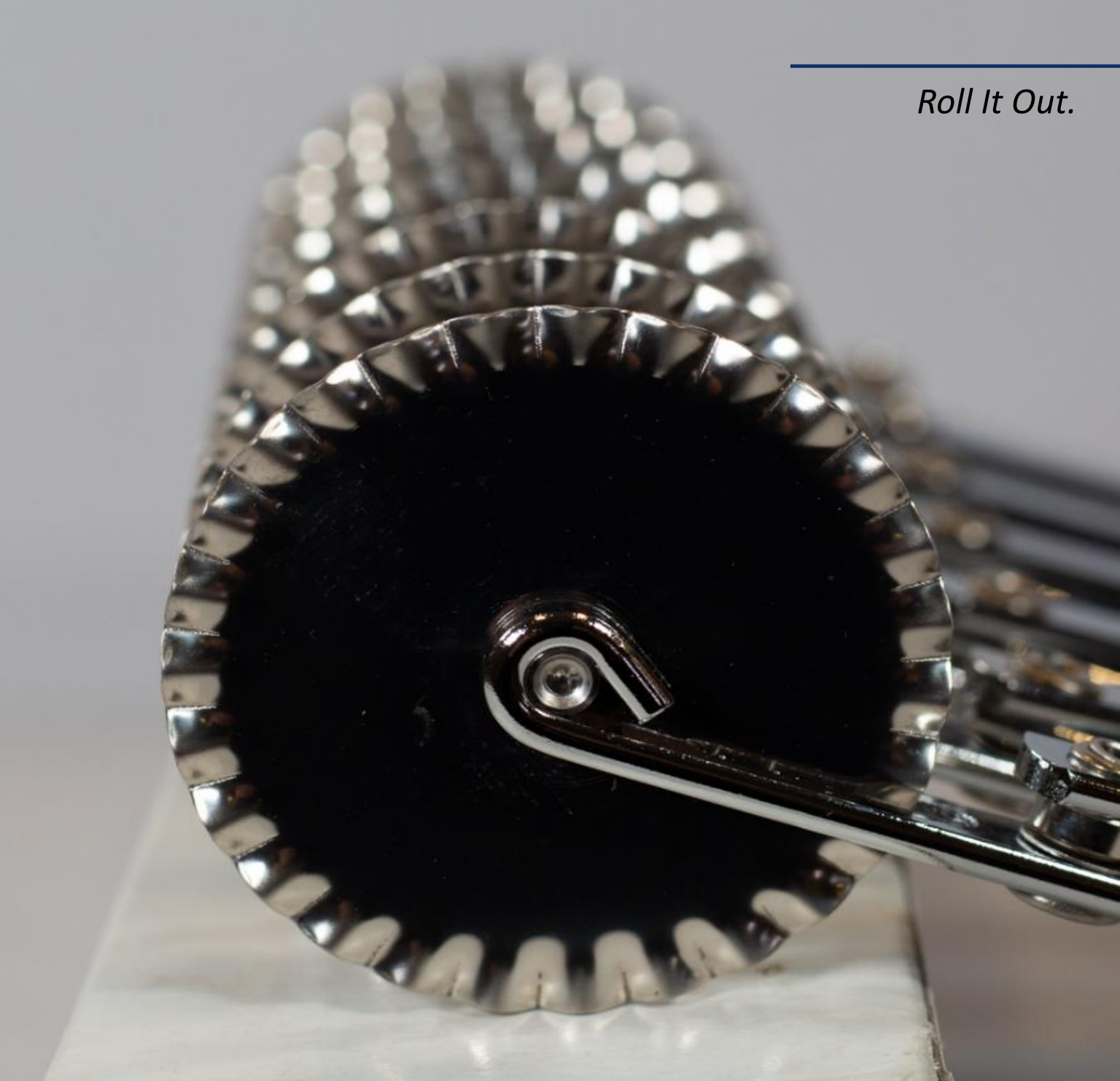
Aluminum Threaded Tip Replacement  
For Telescopic Handle  
Price: \$5.00  
Item #: BRUSH-WFR065



Telescopic Pole 6-12 ft.  
Sherlock with Metal Thread  
Price: \$48.75  
Item #: BRUSH-WS612  
*\*\*Works with 16" & 24" Brooms*

---

*Roll It Out.*



# CUTTERS & ROLLERS

# DOUGH CUTTERS

---



5-Slice, Smooth-Cut  
Material: Stainless Steel  
Price: \$120.00  
Item #: CUTTER-51105



7-Slice, Jagged-Cut  
Material: Stainless Steel  
Price: \$135  
Item #: CUTTER-51207

# D O U G H R O L L E R S

---



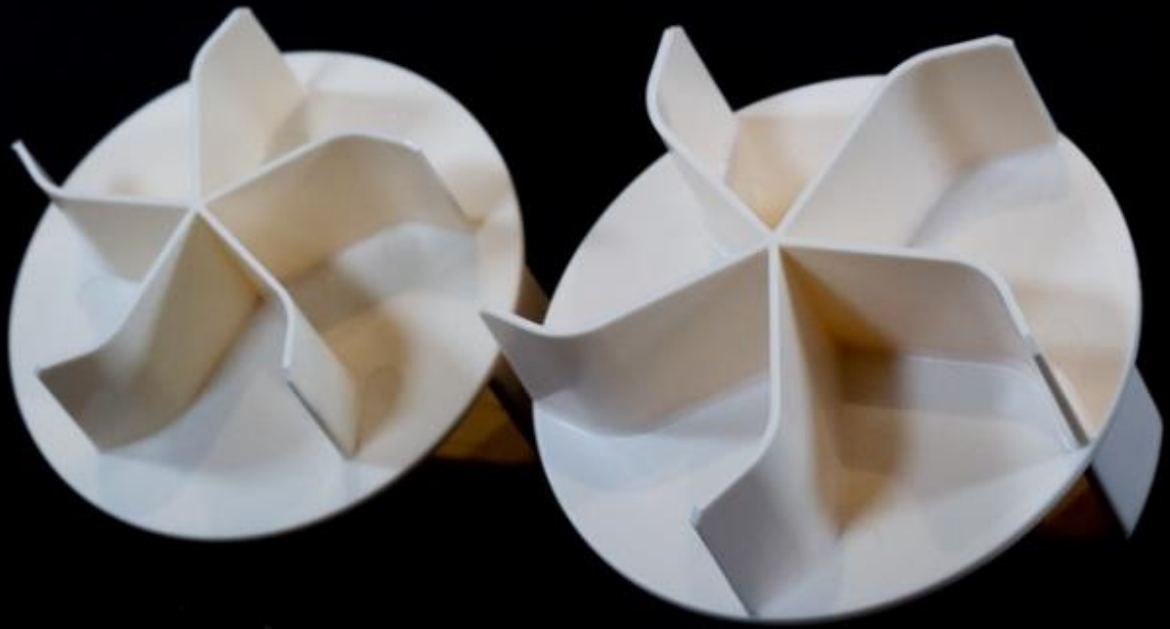
Flat-Edged for Creating  
Lattice Designs with Dough  
Length: 4 X 8 Inches  
Price: \$15  
Item #: ROLLER-75005



Pointed-Edge Docker  
Length: 4.5 x 9 Inches  
Price: \$20.00  
Item #: ROLLER-75002



For Bear Claw Pastry  
Length: 2.25 x 9 Inches  
Price: \$15  
Item #: ROLLER-75004



# ROLL STAMPS

*Customize with patterns.*



# ROLL STAMPS

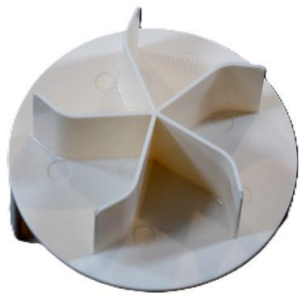
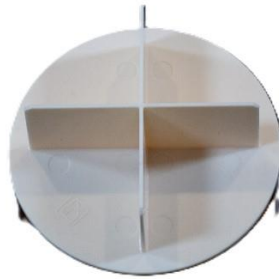
## PLASTIC

---

X-Shape

Price: \$8.00

Item #: STAMP-75011



Small Star

Price: \$8.00

Item #: STAMP-75012

Small Star w/ Center Hole

Price: \$8.00

Item #: STAMP-75013



Large Star

Price: \$13.00

Item #: STAMP-75014





# M I S C E L L A N E O U S

*For additional needs.*



# M I S C E L L A N E O U S

---



## Trolley for Tubs and Ingredients Containers

Dimensions: 19" x 14.625" x 5.125"

Price: \$87.00

Item #: BAC011



## High Temp Leather Oven Gloves with Forearm Protection

Temp Resistant: 572°F (300°C)

Price: \$49.00

Item #: SWGLOVE



## Rack Cover for Single Rack

Dimensions: 28" x 22" x 64"

Price: \$125.00

Item #: RACK-WHITEFRC-1



## Rack Cover for Double Rack

Dimensions: 30" x 38" x 64"

Price: \$138.00

Item #: RACK-DFRC-1

## Condensed Pricing List

	Item	Price
<b>Proofing Baskets with Linen Liner</b>		
1	<b>SWBASKET-TM701PT</b> - Round Proofing Basket, Rattan with Linen Liner, Top Inside Dim: 8.5" (Outside Dim: 9.5") Bottom Dims 6", Height 3.75-4", 1.5 lbs. Capacity	\$11.00
2	<b>SWBASKET-TM702PH</b> - Round Proofing Basket, Rattan with Linen Liner, Top Inside Dim: 10.25" (Outside Dim: 11.25") Bottom Dims 7", Height x 5.25-5.5", 2.5 lbs. Capacity	\$12.00
3	<b>SWBASKET-TM703PH</b> - Round Proofing Basket, Rattan with Linen Liner, Top Inside Dim: 12.25" (Outside Dim: 13.25") Bottom Dim 8", Height 6-6.25", 3-3.5 lbs. Capacity	\$13.00
4	<b>SWBASKET-TM707</b> - Linen Lined Couronne Basket, Top Inside Dim: 11.50" (Outside Dim: 13"), Height 4", Crown Diameter x 3" 2.20 lbs. Capacity	\$23.00
5	<b>SWBASKET-TM711P</b> - Oval 12" Linen Lined Wicker Basket, Top Inside Dim: 12.5" x 6", Outside Bottom Dim 11"x4.5", Height 3", 1.5 lbs. Dough Capacity	\$12.00
6	<b>SWBASKET-TM705P</b> - Oval 14" Linen Lined Wicker Basket, Top Inside Dim: 14"x5", Outside Bottom Dim 11"x3.5", Height 2.75-3", 2 lbs. Dough Capacity	\$12.65
7	<b>SWBASKET-TM704P</b> - Oval 17" Linen Lined Wicker Basket, Top Inside Dim: 17"x7", Outside Bottom Dim 14"x4.5", Height 2.5-3"H), 2.5-3 lbs. Dough Capacity	\$13.00
<b>Proofing Baskets</b>		
8	<b>SWBASKET-GX000200</b> - Round Coiled Wicker Proofing Basket, Top Inside Dim: 7 7/8" (Outside Top Dim: 8.5") Diameter, Height 3.5", 1.5 lbs. Dough Capacity	\$24.00
9	<b>SWBASKET-GX000220</b> - Round Coiled Wicker Proofing Basket, Inside Top Dim: 8 5/8" (Outside Top Dim: 9 1/4"), Height 3.25", 2.20 lbs. Dough Capacity	\$27.00
10	<b>SWBASKET-LINERS</b> - Liner, Small for 1.5 lbs. Baskets (for baskets GX000200)	\$13.00
11	<b>SWBASKET-LINERL</b> - Liner, Large for 2.20 lbs. Baskets (for baskets GX000220)	\$14.00
12	<b>SWBASKET-AO200140</b> - Oval Coiled Wicker Proofing Basket, ID: 7 7/8"L x 5 1/2"W (OD: 8 5/8"L x 6 1/4"W), 1lb. Dough Capacity	\$24.00
13	<b>SWBASKET-AO240140</b> - Oval Coiled Wicker Proofing Basket, ID: 9 1/8"L x 5 1/2"W (OD: 9 7/8"L x 6 1/4"W), 1.5 lbs. Dough Capacity	\$25.00
14	<b>SWBASKET-CB105937</b> - Oval Wooden Basket (GLC), Flat Base, Inside Top Dim: 10.5"x5.5"(Outside Bottom Dim: 8"x2.5"), 1.5 lbs. Dough Capacity	\$11.00
15	<b>SWBASKET-GXK000200</b> - Round Plastic Basket, Top Inside Dim: 7 7/8" (Outside Top Dim: 8 3/8") Diameter with Air Circulation, 1-1.5 lbs. Dough Capacity	\$24.00
16	<b>SWBASKET-GXK000230</b> - Round Plastic Basket, Top Inside Dim: 9 1/4" (Outside Top Dim: 9 5/8") Diameter with Air Circulation, 2.20 lbs. Dough Capacity	\$25.65
17	<b>SWBASKET-AOK210150</b> - Oval Plastic Proofing Basket, Top Dims: 8 1/4" x 5 7/8"W (Outside Dim: 8 3/4"x 6 3/8") with Air Circulation, 1 lb. Dough Capacity	\$23.00
18	<b>SWBASKET-AOK250150</b> - Oval Plastic Proofing Basket, Top Dims: 9 7/8" x 6" (Outside Dim: 10 1/4" x 6 3/8") with Air Circulation, 1.5 lbs. Dough Capacity	\$24.00
19	<b>SWBASKET-AXK290130</b> - Rectangular Plastic Basket, Top Dim: 11.5" x 5" (Outside Dim: 12 1/8"Lx 5 3/4") with Air Circulation, 1.5 lbs. Dough Capacity	\$25.00
20	<b>SWBASKET-AXK340140</b> - Rectangular Plastic Basket, Top Dim: 13 3/8" x 5 1/2" with Air Circulation, 2.20 lbs. Dough Capacity	\$26.50

## Condensed Pricing List

	Item	Price
<b>Cutters/Scrapers</b>		
21	<b>SWSCRAPER-1214.03</b> - Cutter/Scraper Square Stainless Steel Flexible, Dim: 4.38"W x 3.5"L	15.00
22	<b>SWSCRAPER-1216.03</b> - Cutter/Scraper Round Stainless Steel Flexible, Dim: 4.38"W x 3.5"L	\$15.00
23	<b>SWSCRAPER-1211.33.00</b> - Scraper, Square Plastic with Plastic Handle, Dim: 4.38"W x 3.5"L	\$7.50
24	<b>SWSCRAPER-1212.33.00</b> - Scraper, Round Plastic with Plastic Handle, Dim: 4.38"W x 3.5"L	\$7.50
25	<b>SWSCRAPER-76736</b> - Scraper, Square Plastic, White, Dim: 5.5"W x 4"L	\$3.85
26	<b>SWSCRAPER-76718</b> - Scraper, Oval Plastic, White, Dim: 4.5"W x 3.75" L	\$3.85
27	<b>SWSCRAPER-76707</b> - Scraper, Trapezoidal Plastic, White/Ivory, 5.5" Top and 8" Bottom	\$5.00
<b>Oven Peels</b>		
28	<b>SWPEEL-83625</b> - Wooden Hand/Oven Peel 8"x29.5", 6.5in Handle, Overall Dims: 8" wide x 36" long, Russian birch wood	\$29.65
29	<b>SWPEEL-183625</b> - Wooden Hand/Oven Peel 18"x29.5", 6.5in Handle, Overall Dims: 18" wide x 36" long, Russian birch wood	\$34.50
30	<b>SWPEEL-223625</b> - Wooden Hand/Oven Peel 22"x29.5", 6.5in Handle, Overall Dims: 22" wide x 36" long, Russian birch wood	\$36.50
31	<b>SWPEEL-143628</b> - Wooden Hand/Oven Peel, Head 14"x16", 20" Handle, Overall Length 51", Russian birch wood	\$25.00
32	<b>SWPEEL-83615</b> - Wooden Oven Peel, 8"x36" no Handle, Russian birch wood	\$26.65
33	<b>SWPEEL-183615</b> - Wooden Oven Peel, 18"x36" no Handle, Russian birch wood	\$35.00
34	<b>SWPEEL-223615</b> - Wooden Oven Peel, 22"x36" no Handle, Russian birch wood	\$37.50
35	<b>SWPEEL-315</b> - Handle, 3ft Long, 7/8" x 1" Thickness, Russian birch wood	\$15.65
36	<b>SWPEEL-815</b> - Handle, 8ft Long, 7/8" x 1" Thickness, Russian birch wood	\$20.00
<b>Boards</b>		
37	<b>SWBOARD-ADD00133</b> - Wooden Proofing Board US Standard size: 18"x26", 3/8" Thickness, European Birch Wood	\$19.25
38	<b>SWBOARD-00053</b> - Flipping Board, 27.5"x4" with Inscription: TMB Baking	\$16.00
<b>Blades</b>		
39	<b>SWBLADE-6001390002</b> - 10 Pack of Razor Blades	\$5.50
40	<b>SWBLADE-6001390001</b> - Box of Razor Blades, 250 Count, Case Dims: 7.5" x 2" x 1"	\$50.00
41	<b>SWBLADE-0012</b> - Blade Holder/Lame- Medium Ball, 4 ½ length x 3/16" thickness	\$7.50
42	<b>SWBLADE-0013</b> - Blade Holder/Lame- Large Ball , 4 ½ length x ¼" thickness	\$7.50
43	<b>SWBLADE-1092.03.05</b> - Blade Holder/Lame with Plastic Holder 5.75" x ½" thickness	\$9.00

## Condensed Pricing List

	Item	Price
<b>Containers</b>		
44	<b>SWCONTAINER-152705</b> -Traex Bus Tub, Bottom: 17"x12.75" Top: 21.75"x15.5"x7" Deep, 20 lbs. Capacity, Temp Range: -30° to 183°F, High-Density Polyethylene, White, NSF, Made in USA	\$15.00
45	<b>SWCONTAINER-152205</b> -Traex Bus Tub Lid - Size: 15"x20" Freezer & Dishwasher Safe, High-Density Polyethylene, White, NSF, Made in USA	\$13.50
46	<b>SWCONTAINER-BAC008</b> - Container for Ingredients, 50 lbs. Flour Capacity, White PP, Height 17 5/8" x 17" Width – Item #: SWCONTAINER-BAC008	\$39.00
47	<b>SWCONTAINER-BAC008CI</b> - Cover for Container Item# SWCONTAINER-BAC008, Ivory, Height 1 1/8" x 17" Width	\$27.00
<b>Linen Couche</b>		
48	<b>SWLINEN-18INCH</b> - Yard of 18" Width Linen/Couche, 100% Woven Flax	\$11.50
49	<b>SWLINEN-26INCH</b> - Yard of 26" Width Linen/Couche, 100% Woven Flax	\$13.50
50	<b>SWLINEN-31INCH</b> - Yard of 31" Width Linen/Couche, 100% Woven Flax	\$14.25
<b>Brushes/Brooms</b>		
51	<b>SWBRUSH-8301</b> – Counter Flour Brush 12", Light Bristle	\$22.00
52	<b>SWBRUSH-8302</b> – Counter Flour Brush 12", Dark Bristle	\$22.00
53	<b>SWBRUSH-6432</b> – Counter Brush, 10", Wooden handle with Grey Polystyrene Bristle	\$15.00
54	<b>SWBRUSH-403016</b> - Oven Broom, 16" for Stone Deck Oven, Tampico Bristles	\$48.50
55	<b>SWBRUSH-1565</b> - Oven Broom, 20", Wooden Head with Natural Bristles (Requires hardware: SWBRUSH-1500)	\$48.00
56	<b>SWBRUSH-403024</b> - Oven Brick Hearth Broom, 24", Tampico Bristles	\$59.00
57	<b>SWBRUSH-B370</b> - Deck Oven Brush – 28" Brush Head, 51" Overall	\$45.00
58	<b>SWBRUSH-1500</b> - Hardware for 20" Oven Broom (Item #SWBRUSH-1565). Opening of 1" Diameter for Wooden Handle	\$15.00
59	<b>SWBRUSH-WFR065</b> - Metal Threading for Broom Handle, Replacement for WS612	\$5.00
60	<b>SWBRUSH-WS612</b> - Telescopic Ext. Pole 6-12 ft., Sherlock	\$48.75
<b>Cutters/Rollers</b>		
61	<b>SWCUTTER-51105</b> - Croissant/Dough Cutter, 5 Slices, Smooth-Cut, Stainless Steel	\$120.00
62	<b>SWCUTTER-51207</b> - Croissant/Dough Cutter, 7 Slices, Jagged Cut, Stainless Steel	\$135.00
63	<b>SWROLLER-75002</b> - Roller, 4.5" wide x 9" long, Pointed-Edge Docker	\$20.00
64	<b>SWROLLER-75004</b> - Roller, 2.5" wide x 9" long, Bear Claw Lines 2.25"	\$15.00
65	<b>SWROLLER-75005</b> - Roller, 4" wide x 9" long, Flat Edged for Creating Lattice Designs, White color 4" wide x 8" long	\$15.00

## Condensed Pricing List

	Item	Price
<b>Stamps</b>		
66	<b>SWSTAMP-75011</b> - Roll Stamp, Kaiser, X-Shape, Plastic, Ivory, Shape 2.25", Overall: 3"	\$8.00
67	<b>SWSTAMP-75012</b> - Roll Stamp, Kaiser, Small Star, Plastic, Ivory, Shape 2.5", Overall: 3"	\$8.00
68	<b>SWSTAMP-75013</b> - Roll Stamp, Kaiser, Small Star Hole, Ivory, Shape 2.5", Overall: 3"	\$8.00
69	<b>SWSTAMP-75014</b> - Roll Stamp, Kaiser, Large Star, Plastic, Ivory, Overall/Shape dims: 3"	\$13.00

<b>Miscellaneous</b>		
70	<b>SWCONTAINER-BAC011</b> - Trolley for Item# SWCONTAINER-BAC008, 19"L x 14 5/8"W x 5 1/8"H	\$87.00
71	<b>SWGLOVE</b> – SASA High Temp Leather Oven Gloves with Forearm Protection	\$49.00
72	<b>RACK-WHITEFRC-1</b> - Rack Cover, STD White Freezer Window, Plastic 10 Ounce Material, Size: 28x22x64 inches	\$125.00
73	<b>RACK-DFRC-1</b> - Rack Cover for Double Rack, Size: 30x38x64 inches	\$138.00

## TMB Baking Discontinued Items

***Once items deplete they will be permanently discontinued***

1	<b>SWROLLER-75002</b> - Roller, Dough 4.75" Pointed-Edge Docker	Limited Stock
2	<b>SWROLLER-75004</b> - Roller for Making Bear Claw Pastry, Square 2.56"	Limited Stock
3	<b>SWROLLER-75005</b> - Roller, Dough 4.75" Flat Edged for Creating Lattice Designs with Dough	Limited Stock
4	<b>SWSTAMP-75011</b> - Roll Stamp, Kaiser, X-Shape, Plastic	Limited Stock
5	<b>SWSTAMP-75012</b> - Roll Stamp, Kaiser, Small Star, Plastic	Limited Stock
6	<b>SWSTAMP-75013</b> - Roll Stamp, Kaiser, Small Star with Center Hole, Plastic	Limited Stock
7	<b>SWSTAMP-75014</b> - Roll Stamp, Kaiser, Large Star, Plastic	Limited Stock
8	<b>SWBASKET-AO200140</b> - Oval Coiled Wicker Proofing Basket, ID: 7 7/8"L x 5 1/2"W (OD: 8 5/8"L x 6 1/4"W), 1lb. Dough Capacity	Stock Available
10	<b>SWBASKET-AOK210150</b> - Oval Plastic Proofing Basket, ID: 8 3/8"L x 6"W (OD: 8 3/4"L x 6 3/8"W) with Air Circulation, 1 lb. Dough Capacity	Stock Available
11	<b>SWBASKET-CB105937</b> - Oval Wooden Basket (GLC), Flat Base, ID: 9 1/2"L x 4 3/4" W (OD: 10 1/4"L x 5 3/8" W), 1.5 lbs. Dough Capacity	Stock Available
12	<b>SWBASKET-TM707</b> - Linen Lined Couronne Basket, ID: 11.50" (OD: 13") Diameter x 4"H, Crown Diameter x 3" 1.5-2 lbs. Dough Capacity	Limited Stock

## **RETURN POLICY**

All claims on damages or shortages must be made upon receipt of goods

Returns are subject to 20% restocking fee

Restocking fee will be waived for exchange orders

Items must be unused

Returns accepted within 30 days with a signed RMA

No credit will apply for the original shipping & handling

Customer is responsible for return shipping cost

