

SMALLWARES CATALOG 2024



About Us: TMB Baking is a full-service baking equipment and accessories company serving the North American artisan bread and baked goods industry. Over the past 39 years, we have serviced our customers by providing process and layout consulting services; bakery equipment selection including accessories, spare parts, and smallwares; and installation and technical support to allow bakeries to grow and flourish.

Our Smallwares Catalog is only a fraction of the materials available. If you don't see what you need, please call us at (650) 589-5724 or send us an email at smallwares@tmbbaking.com with a photo or description of what you're seeking and we'll do our best to locate and quote the items you require.

Be sure to check out our wide range of bakery equipment, including deck ovens, rack ovens, retarder-proofers, spiral mixers, dividers, divider-rounders, baguette moulders, and other products.

Thank you for allowing us the opportunity to serve your bakery equipment, smallwares, accessories, consulting, and spare parts needs!

NOTICE: Due to increased costs of packaging and labor, we are forced to implement a \$15 fee on any orders under \$50.

****RETURN POLICY AND APPROXIMATE MEASUREMENTS ON MOST ITEMS ARE IN THE BACK**

Table of Contents

Product	Pages
Proofing Baskets	3-8
Linen Liners	6
Cutters/Scrapers	9-11
Oven Peels	12-14
Boards	15
Blades & Lames	16-17
Containers	18-19
Linen Couche	20-21
Brushes/Brooms	22-25
Cutters/Rollers	26-28
Stamps	29-30
Miscellaneous	31-32
Condensed Pricing List	33-36

PROOFING BASKETS



*Provide support and shape to your dough while
it proofs in our baskets.*

PROOFING BASKETS

ROUND RATTAN LINEN LINED



Capacity: 1-1.5lbs
Dimensions: ID: 8.5" (OD: 9.5")
Price: \$11.00
Item #: SWBASKET-TM701PT



Capacity: 2-2.5lbs
Dimensions: ID: 10.25" (OD: 11.25")
Price: \$12.00
Item #: SWBASKET-TM702PH



Capacity: 3-3.5lbs
Dimensions: ID: 12.25" (OD: 13.25")
Price: \$15.00
Item #: SWBASKET-TM703PH



Capacity: 1.5-2lbs
Dimensions: ID: 11.5" (OD: 13")
Price: \$23.00
Item #: SWBASKET-TM707

*Rattan & coil baskets are handmade, therefore individual basket size may vary

PROOFING BASKETS

OVAL RATTAN LINEN LINED

Capacity: 1lbs
Dimensions: ID: 12.5"
Price: \$12.00
Item #: SWBASKET-TM711P



Capacity: 1-1.5lbs
Dimensions: ID: 14"
Price: \$12.65
Item #: SWBASKET-TM705P



Capacity: 2.5-3lbs
Dimensions: ID: 17"
Price: \$13.50
Item #: SWBASKET-TM704P



PROOFING BASKETS

ROUND WOODEN COILED



Capacity: 1.5lbs
Dimensions: ID: 7.875" (OD: 8.5")
Price: \$24.00
Item #: SWBASKET-GX000200



Capacity: 2lbs
Dimensions: ID: 8.525" (OD: 9.25")
Price: \$27.00
Item #: SWBASKET-GX000220

*Each basket is handmade, therefore individual basket size may vary.

OPTIONAL LINEN LINERS



Fits Item #: SWBASKET-GX000200
Capacity: 1-1.5lbs
Price: \$14.50
Item #: SWBASKET-LINERS



Fits Item #: SWBASKET-GX000220
Capacity: 1.5-2lbs
Price: \$15.75
Item #: SWBASKET-LINERL

PROOFING BASKETS

OVAL WOODEN COILED



Capacity: 1lbs

Dimensions: ID: 7.875" (OD: 8.625")

Price: \$24.00

Item #: SWBASKET-AO200140



Capacity: 1.5lbs

Dimensions: ID: 9.125" (OD: 9.875")

Price: \$25.00

Item #: SWBASKET-AO240140

Linen Liners available for \$16.00

Item #: SWBASKET-LINERO



Capacity: 1.5lbs

Dimensions: ID: 9.5" (OD: 10.25")

Price: \$11.00

Item #: SWBASKET-CB105937

PROOFING BASKETS

PLASTIC



Capacity: 1-1.5lbs
Dimensions: ID: 7.865" (OD: 8.375")
Price: \$24.00
Item #: SWBASKET-GXK000200



Capacity: 2lbs
Dimensions: ID: 9.25" (OD: 9.625")
Price: \$25.65
Item #: SWBASKET-GXK000230



Capacity: 1lb
Dimensions: ID: 8.375" (OD: 8.75")
Price: \$23.00
Item #: SWBASKET-AOK210150



Capacity: 1-1.5lbs
Dimensions: ID: 9.875" (OD: 10.25")
Price: \$24.00
Item #: SWBASKET-AOK250150



Capacity: 1.5lbs
Dimensions: ID: 11.625" (OD: 12.125")
Price: \$25.00
Item #: SWBASKET-AXK290130

Capacity: 2lbs (same shape, just larger)
Dimensions: ID: 13.38" long x 5.5"
Price: \$26.50
Item #: SWBASKET-AXK340140

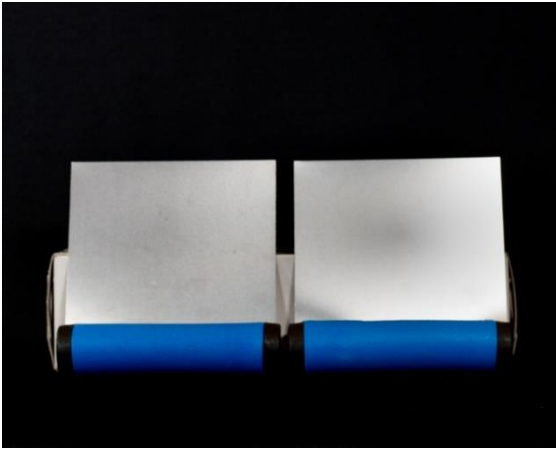
CUTTERS SCRAPERS

Scrape your bowls and cut dough easily.

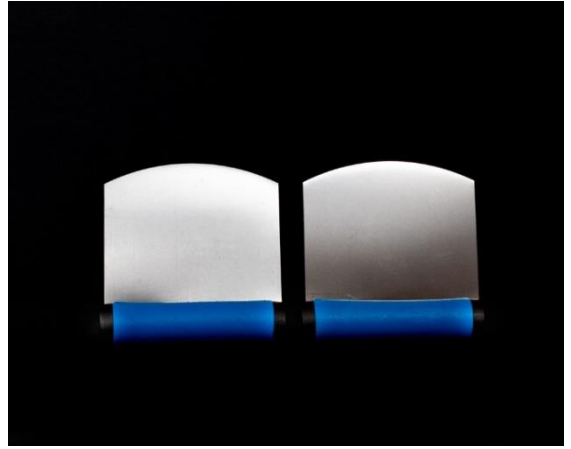


CUTTERS & SCRAPERS

STAINLESS STEEL



Square Stainless Steel
Price: \$16.50
Item #: SWSCRAPER-1214.03



Round Stainless Steel
Price: \$16.50
Item #: SWSCRAPER-1216.03

PLASTIC



Square Plastic With Plastic Handle
Price: \$7.00
Item #: SWSCRAPER-1211.33.00



Round Plastic With Plastic Handle
Price: \$7.00
Item #: SWSCRAPER-1212.33.00

CUTTERS & SCRAPERS

Square Plastic

Price: \$3.75

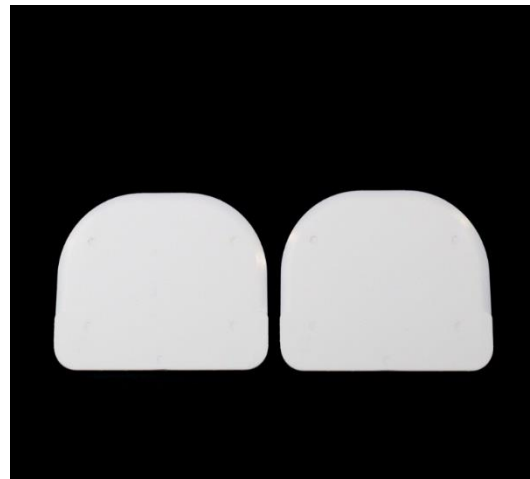
Item #: SWSCRAPER-76736



Oval Plastic

Price: \$3.75

Item #: SWSCRAPER-76718



Trapezoidal Plastic

Price: \$5.00

Item #: SWSCRAPER-76707



P E E L S
H A N D L E S
B O A R D S

*For the long
and short of it.*



PEELS

WITH HANDLE



Dimensions: 8" x 29.5", 6.5" Handle

Price: \$29.65

Item #: SWPEEL-83625



Dimensions: 18" x 36", 6.5" Handle

Price: \$34.50

Item #: SWPEEL-183625



Dimensions: 22" x 36", 6.5" Handle

Price: \$36.50

Item #: SWPEEL-223625



Dimensions: 14" x 16", 20" Handle

Price: \$25.00

Item #: SWPEEL-143628

PEELS

WITHOUT HANDLE

Dimensions: 8" x 36", No Handle

Price: \$26.95

Item #: SWPEEL-83615



Dimensions: 18" x 36", No Handle

Price: \$35.00

Item #: SWPEEL-183615



Dimensions: 22" x 36", No Handle

Price: \$37.50

Item #: SWPEEL-223615



OPTIONAL: Handle/Pole

Length: 3ft

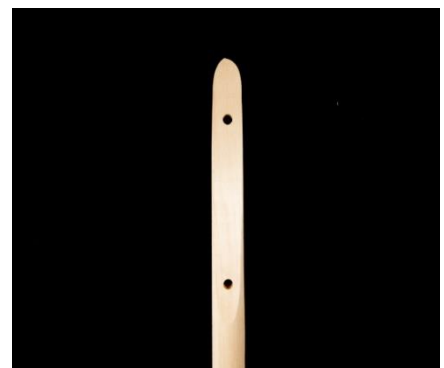
Price: \$15.65

Item #: SWPEEL-315

Length: 8ft

Price: \$20.00

Item #: SWPEEL-815



BOARDS



Baguette Board with TMB Baking Logo
Material: 5-Ply Poplar Wood
Dimensions: 27.5" x 4"
Price: \$18.00
Item #: SWBOARD-00053



Wooden Proofing Board
Material: Baltic Birch Wood
Dimensions: 18" x 26", 0.375" Thick
Price: \$19.25
Item #: SWBOARD-ADD00133

BLADES & LAMES



You score, YOU win!

RAZOR BLADES

& ACCESSORIES



10-Pack of Razor Blades

Price: \$5.50

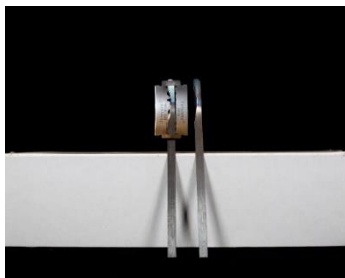
Item #: SWBLADE-6001390002



250-Count Box of Razor Blades

Price: \$50.00

Item #: SWBLADE-6001390001



Med. stainless Steel Blade Holder

4.5" L x **3/16"** Handle Thickness

Price: \$7.50

Item #: SWBLADE-0012

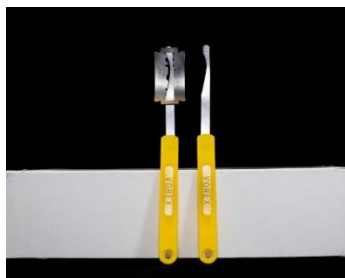


Lg. Stainless Steel Blade Holder

4.5" L x **1/4"** Handle Thickness

Price: \$7.50

Item #: SWBLADE-0013



Lame With Attached Plastic Holder

Price: \$9.00

Item #: SWBLADE-1092.03.05



C O N T A I N E R S

For all your proofing and storage needs.



C O N T A I N E R S

& L I D S



Ingredient Container
Capacity: 50lbs.
Dimensions: 17.625" x 17"
Price: \$49.00
Item #: SWCONTAINER-BAC008



LID for Ingredient Container
Dimensions: 1.125" x 17"
Price: \$33.00
Item #: SWCONTAINER-BAC008CI



Bus Tub
Capacity: 20lbs.
Dimensions: 17" x 12.75" x 7"
Price: \$15.00
Item #: SWCONTAINER-152705



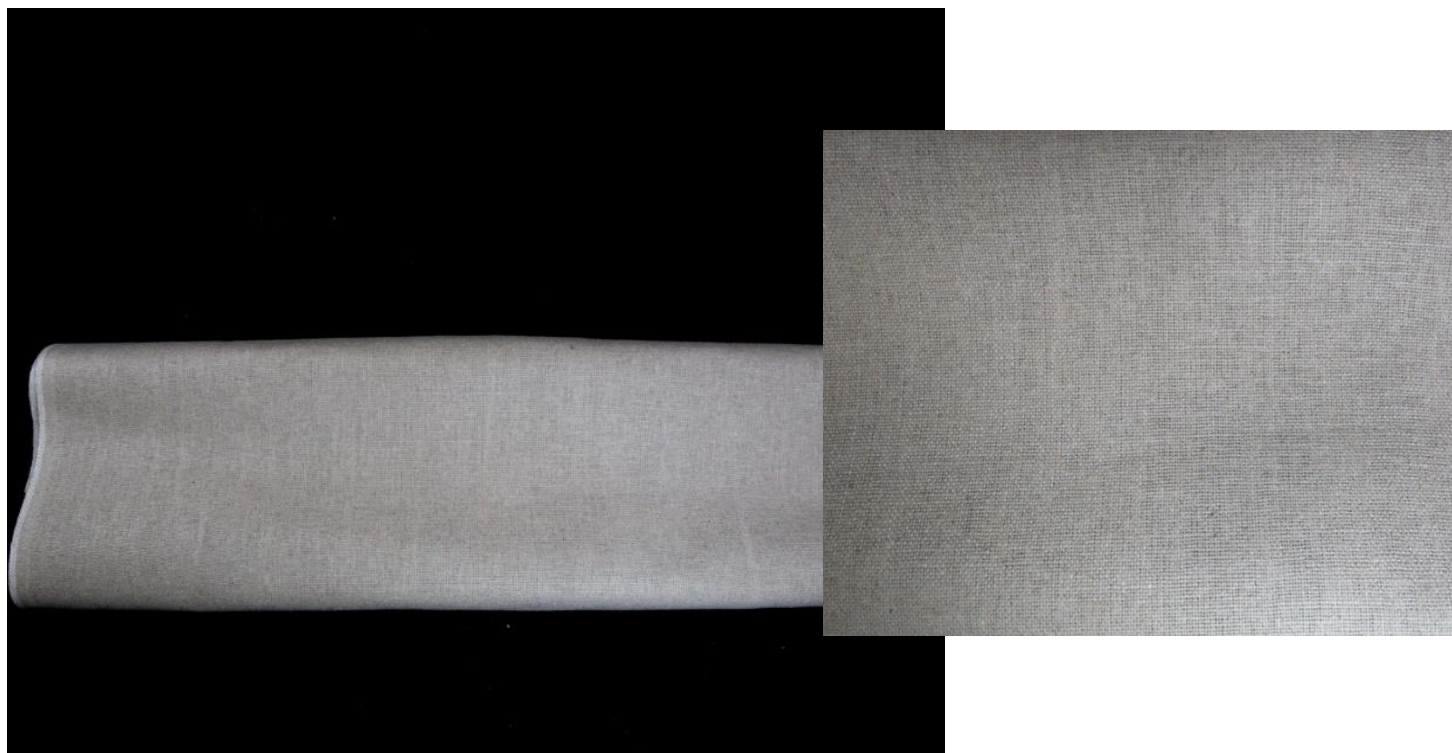
LID for Tubs
Dimensions: 15" x 20"
Price: \$13.50
Item #: SWCONTAINER-152205

L I N E N



Perfect support for your baguettes.

L I N E N C O U C H E



Available in the following lengths:

Length	Item #	Price
Yard of 18" Width	SWLINEN-18INCH	\$11.50
Yard of 26" Width	SWLINEN-26INCH	\$13.50
Yard of 31" Width	SWLINEN-31INCH	\$14.25

Rolls (50 yards per roll) are available and discounted 5% at checkout.

Linen can be cut and serge seam finished for quantity orders.

Please contact TMB Baking at smallwares@tmbbaking.com

B R O O M S

Keep your space clean, easily.



OVEN BRUSHES

Material: Tampico Bristles
Length: 16"
Price: \$48.50
Item #: SWBRUSH-403016
***Handle sold separately*



Material: Natural Bristles
Requires Hardware
Length: 20"
Price: \$48.00
Item #: SWBRUSH-1565



Material: Tampico Bristles
Length: 24"
Price: \$59.00
Item #: SWBRUSH-403024
***Handle sold separately*



For Shallow Ovens
Length: Brush: 28" (51"L)
Price: \$45
Item #: SWBRUSH-B370



FLOUR BROOMS

Material: Light Bristles
(Horsehair & Synthetic Mix)
Length: 12"
Price: \$22.00
Item #: SWBRUSH-8301



Material: Dark Bristles
100% Horsehair
Length: 12"
Price: \$22.00
Item #: SWBRUSH-8302



BRUSH

Material: Grey Polystyrene Bristle
Length: 10" with Wooden Handle
Price: \$15.00
Item #: SWBRUSH-6432



B R O O M

A C C E S S O R I E S



Hardware for
Item #: SWBRUSH-1565
Opening of 1" Diameter for
Wooden Handle
Price: \$15.00
item #: SWBRUSH-1500

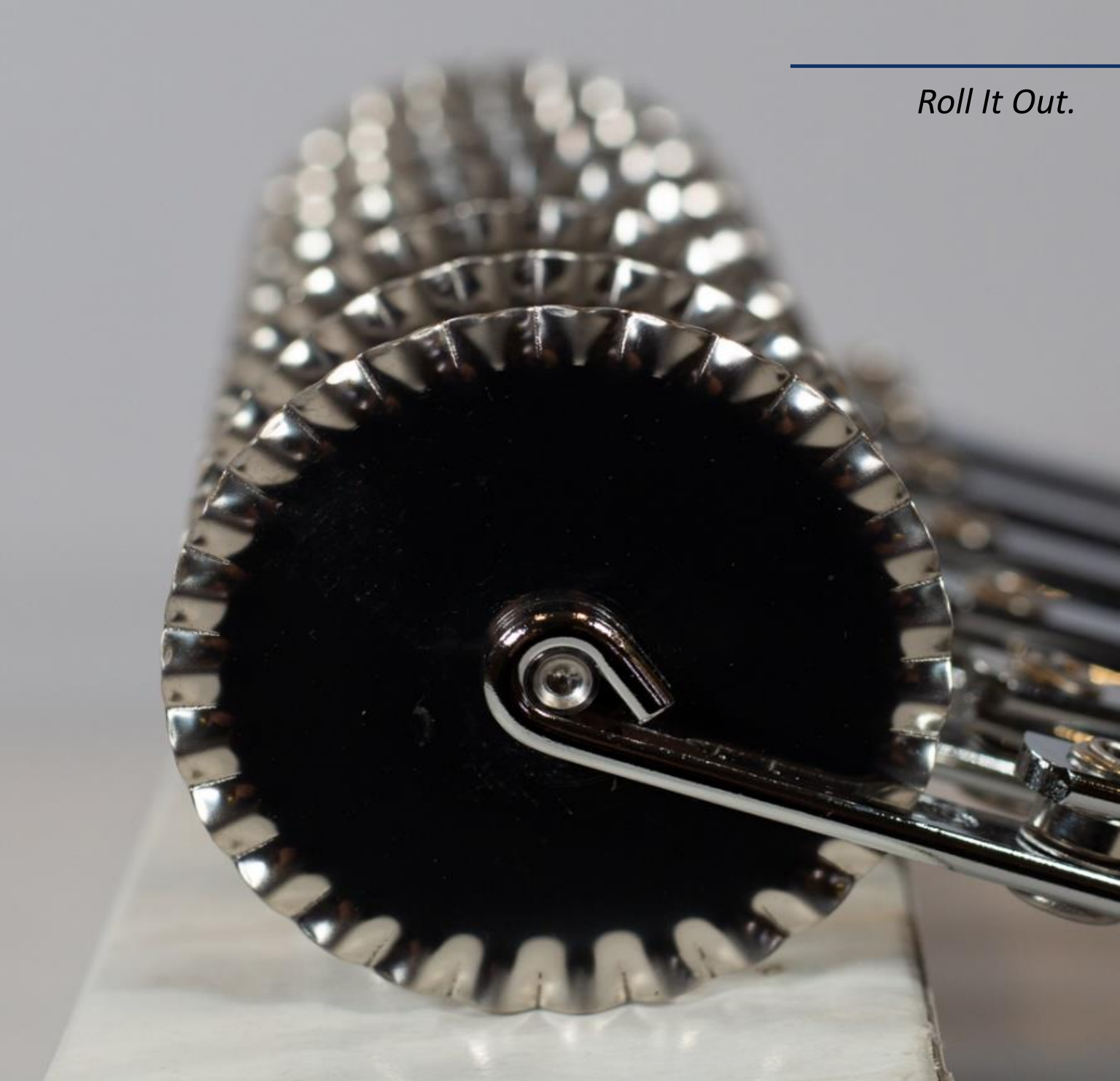


Metal Threading Replacement
For Telescopic Handle
Price: \$5.00
Item #: SWBRUSH-WFR065



Telescopic Ext. Pole 6-12
ft. | Sherlock with Metal
Thread
Price: \$48.75
Item #: SWBRUSH-WS612
***Works with 16" & 24" Brooms*

Roll It Out.



CUTTERS & ROLLERS

DOUGH CUTTERS



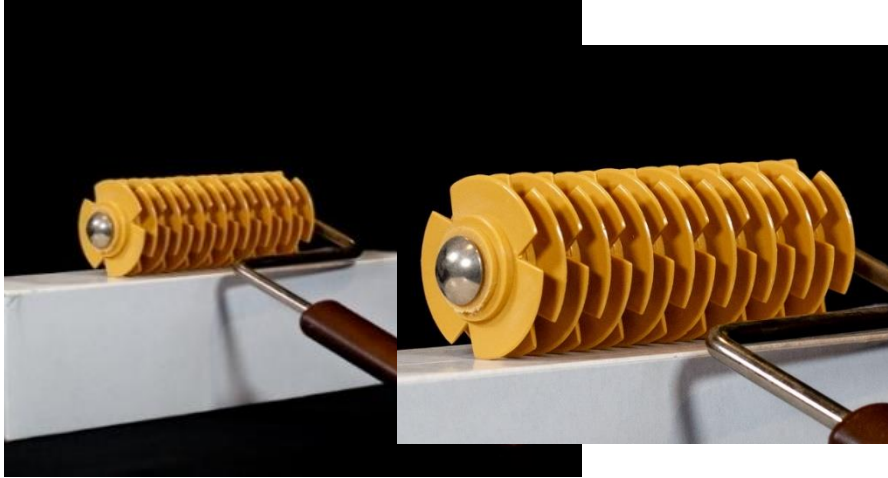
5-Slice, Smooth-Cut
Material: Stainless Steel
Price: \$140.00
Item #: SWCUTTER-51105



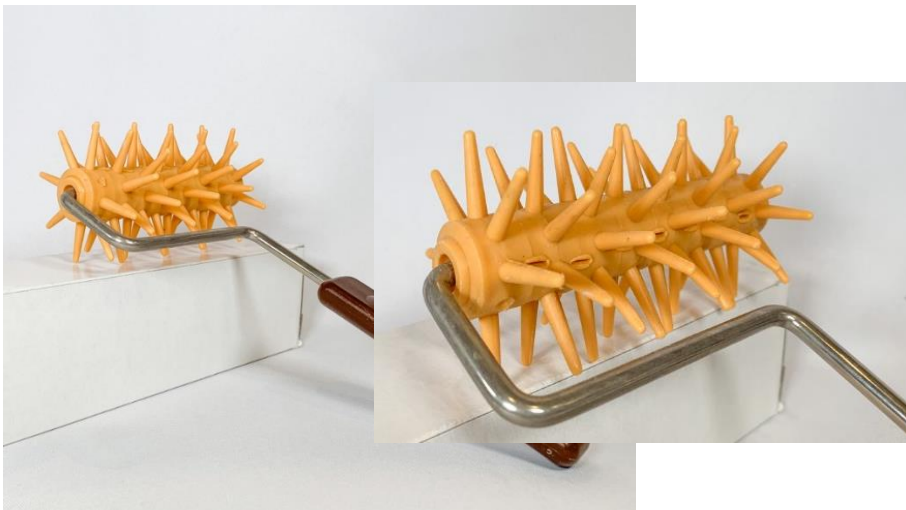
7-Slice, Jagged-Cut
Material: Stainless Steel
Price: \$149.00
Item #: SWCUTTER-51207



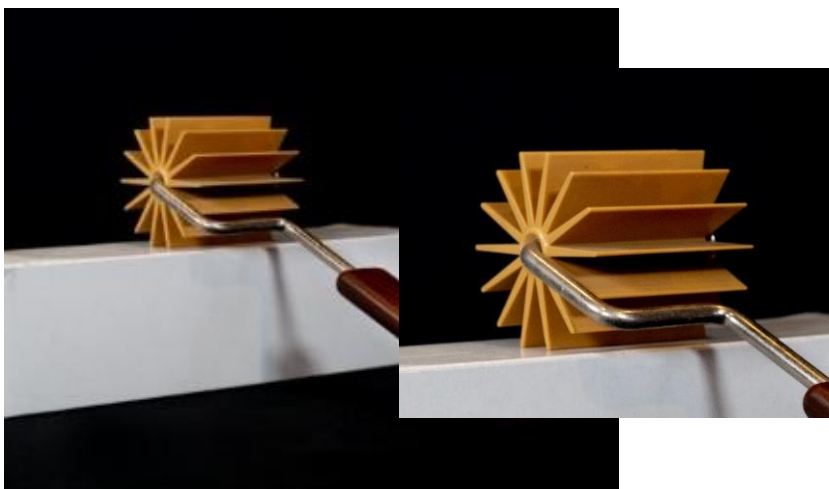
DOUGH ROLLERS



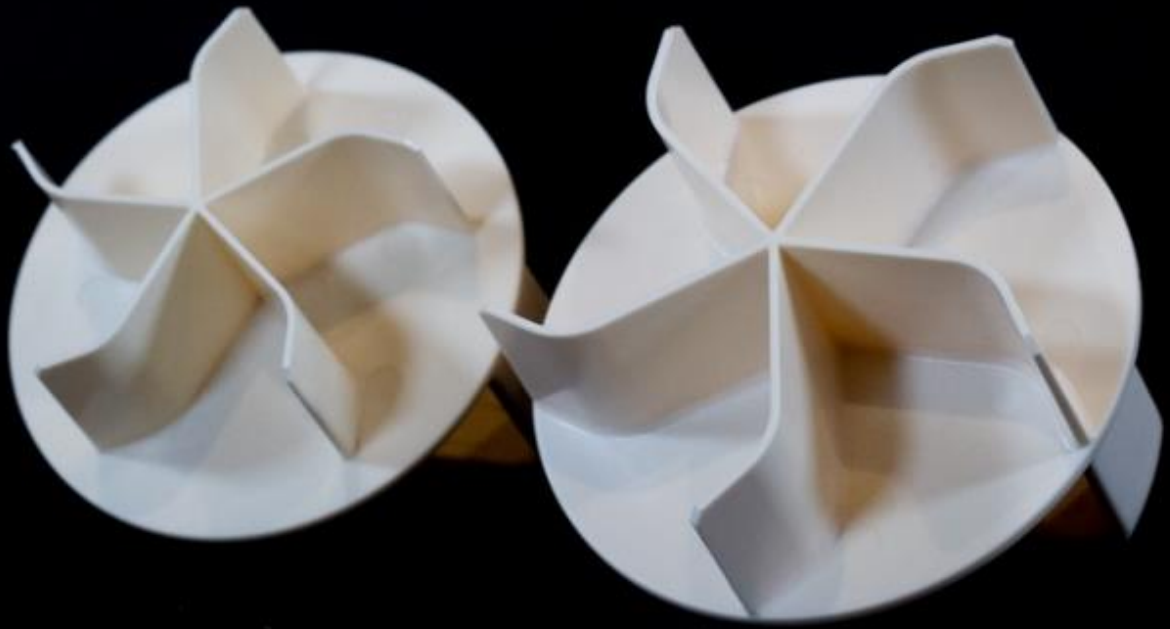
Flat-Edged for Creating
Lattice Designs with Dough
Length: 4.75"
Price: \$20.00
Item #: SWROLLER-75005



Pointed-Edge Docker
Length: 4.75"
Price: \$20.00
Item #: SWROLLER-75002



For Bear Claw Pastry
Length: 2.56"
Price: \$20.00
Item #: SWROLLER-75004



ROLL STAMPS

Customize with patterns.



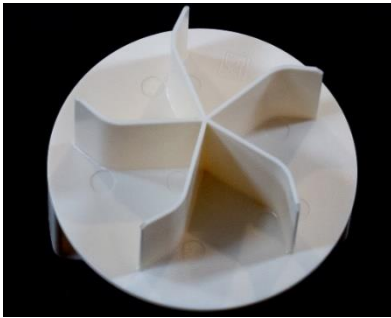
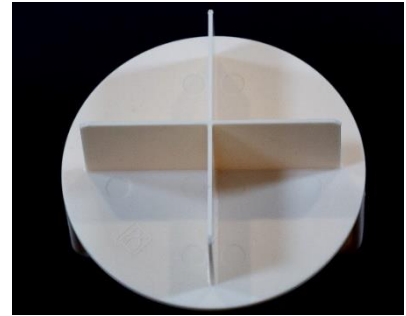
ROLL STAMPS

PLASTIC

X-Shape

Price: \$7.75

Item #: SWSTAMP-75011



Small Star

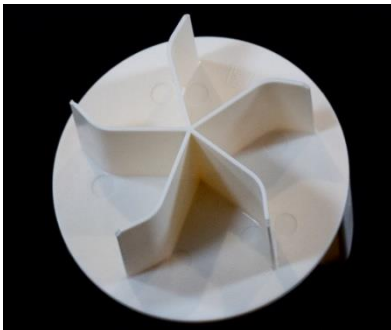
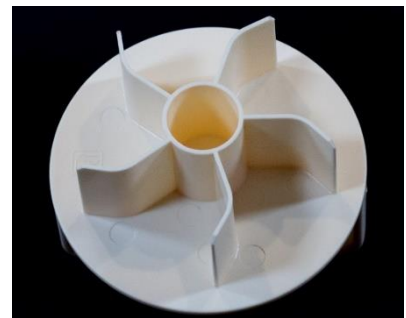
Price: \$7.75

Item #: SWSTAMP-75012

Small Star w/ Center Hole

Price: \$7.75

Item #: SWSTAMP-75013



Large Star

Price: \$13.00

Item #: SWSTAMP-75014



M I S C E L L A N E O U S

For additional needs.

M I S C E L L A N E O U S



Trolley Work for Tub and Ingredients Containers

Dimensions: 19" x14.625" x 5.125"

Price: \$87.00

Item #: SWCONTAINER-BAC011



High Temp Leather Oven Gloves with Forearm Protection

Temp Resistant: 572°F (300°C)

Price: \$49.00

Item #: SWGLOVE

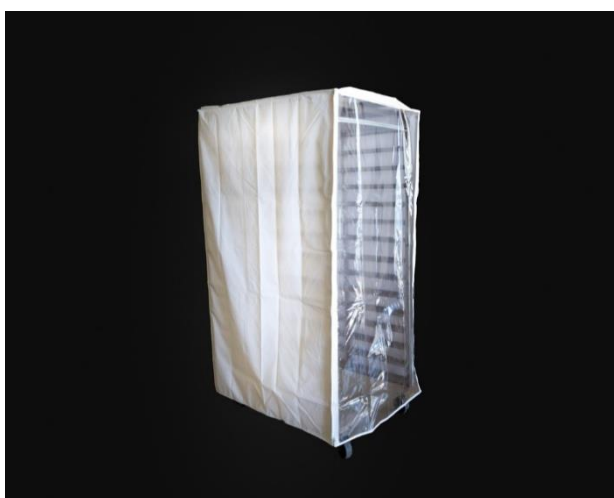


Rack Cover for Single Rack

Dimensions: 28" x 22" x 64"

Price: \$125.00

Item #: RACK-WHITEFRC-1



Rack Cover for Double Rack

Dimensions: 30" x 38" x 64"

Price: \$138.00

Item #: RACK-DFRC-1

Condensed Pricing List

	Item	Price
Proofing Baskets with Linen Liner		
1	SWBASKET-TM701PT - Round Proofing Basket, Rattan with Linen Liner, ID: 8.5" (OD: 9.5") Diameter x 3.75"H, 1-1.5 lbs. Dough Capacity	\$11.00
2	SWBASKET-TM702PH - Round Proofing Basket, Rattan with Linen Liner, ID: 10.25" (OD: 11.25") Diameter x 5.25"H, 2-2.5 lbs. Dough Capacity	\$12.00
3	SWBASKET-TM703PH - Round Proofing Basket, Rattan with Linen Liner, ID: 12.25" (OD: 13.25") Diameter x 6.25"H, 3-3.5 lbs. Dough Capacity	\$15.00
4	SWBASKET-TM707 - Linen Lined Couronne Basket, ID: 11.50" (OD: 13") Diameter x 4"H, Crown Diameter x 3" 1.5-2 lbs. Dough Capacity	\$23.00
5	SWBASKET-TM711P - Oval 12" Linen Lined Wicker Basket, (ID: 12.5"L x 5.5"W x 2.75"H), 1lb Dough Capacity	\$12.00
6	SWBASKET-TM705P - Oval 14" Linen Lined Wicker Basket, (ID: 13.75"L x 5.5"W x 2.5"H), 1-1.5 lbs. Dough Capacity	\$12.65
7	SWBASKET-TM704P - Oval 17" Linen Lined Wicker Basket, (ID: 16.5"L x 6.5"W x 2.5"H), 2.5-3 lbs. Dough Capacity	\$13.50
Proofing Baskets		
8	SWBASKET-GX000200 - Round Coiled Wicker Proofing Basket, ID: 7 7/8" (OD: 8 1/2") Diameter, 3.25" High, 1.5 lbs. Dough Capacity	\$24.00
9	SWBASKET-GX000220 - Round Coiled Wicker Proofing Basket, ID: 8 5/8" (OD: 9 1/4"), 3.25" High, 2 lbs. Dough Capacity	\$27.00
10	SWBASKET-LINERS - Liner, Small for 1 - 1.5 lbs. Baskets (for baskets GX000200)	\$14.50
11	SWBASKET-LINERL - Liner, Large for 1.5 – 2 lbs. Baskets (for baskets GX000220)	\$15.75
12	SWBASKET-AO200140 - Oval Coiled Wicker Proofing Basket, ID: 7 7/8"L x 5 1/2"W (OD: 8 5/8"L x 6 1/4"W), 1lb. Dough Capacity	\$24.00
13	SWBASKET-AO240140 - Oval Coiled Wicker Proofing Basket, ID: 9 1/8"L x 5 1/2"W (OD: 9 7/8"L x 6 1/4"W), 1.5 lbs. Dough Capacity	\$25.00
14	SWBASKET-CB105937 - Oval Wooden Basket (GLC), Flat Base, ID: 9 1/2"L x 4 3/4" W (OD: 10 1/4"L x 5 3/8" W), 1.5 lbs. Dough Capacity	\$11.00
15	SWBASKET-GXK000200 - Round Plastic Basket, ID: 7 7/8" (OD: 8 3/8") Diameter with Air Circulation, 1-1.5 lbs. Dough Capacity	\$24.00
16	SWBASKET-GXK000230 - Round Plastic Basket, ID: 9 1/4" (OD: 9 5/8") Diameter with Air Circulation, 2 lbs. Dough Capacity	\$25.65
17	SWBASKET-AOK210150 - Oval Plastic Proofing Basket, ID: 8 3/8"L x 6"W (OD: 8 3/4"L x 6 3/8"W) with Air Circulation, 1 lb. Dough Capacity	\$23.00
18	SWBASKET-AOK250150 - Oval Plastic Proofing Basket, ID: 9 7/8"L x 6"W (OD: 10 1/4"L x 6 3/8"W) with Air Circulation, 1.5 lbs. Dough Capacity	\$24.00
19	SWBASKET-AXK290130 - Rectangular Plastic Basket, ID: 11 5/8"L x 5 3/8"W (OD: 12 1/8"L x 5 3/4"W) with Air Circulation, 1.5 lbs. Dough Capacity	\$25.00
20	SWBASKET-AXK340140 - Rectangular Plastic Basket, 13 3/8" L x 5 1/2" W with Air Circulation, 2 lbs. Dough Capacity	\$26.50

Condensed Pricing List

	Item	Price
Cutters/Scrapers		
21	SWSCRAPER-1214.03 - Cutter/Scraper Square Stainless Steel Flexible	\$16.50
22	SWSCRAPER-1216.03 - Cutter/Scraper Round Stainless Steel Flexible	\$16.50
23	SWSCRAPER-1211.33.00 - Scraper, Square Plastic with Plastic Handle	\$7.00
24	SWSCRAPER-1212.33.00 - Scraper, Round Plastic with Plastic Handle	\$7.00
25	SWSCRAPER-76736 - Scraper, Square Plastic, White	\$3.75
26	SWSCRAPER-76718 - Scraper, Oval Plastic, White	\$3.75
27	SWSCRAPER-76707 - Scraper, Trapezoidal Plastic, White, 5.5" Top and 8" Bottom	\$5.00
Oven Peels		
28	SWPEEL-83625 - Wooden Hand/Oven Peel 8"x29.5", 6.5in Handle, Russian birch wood	\$29.65
29	SWPEEL-183625 - Wooden Hand/Oven Peel 18"x36", 6.5in Handle, Russian birch wood	\$34.50
30	SWPEEL-223625 - Wooden Hand/Oven Peel 22"x36", 6.5in Handle, Russian birch wood	\$36.50
31	SWPEEL-143628 - Wooden Hand/Oven Peel 14"x16", 20" Handle, Overall Length 51"	\$25.00
32	SWPEEL-83615 - Wooden Oven Peel, 8"x36" no Handle, Russian birch wood	\$26.65
33	SWPEEL-183615 - Wooden Oven Peel, 18"x36" no Handle, Russian birch wood	\$35.00
34	SWPEEL-223615 - Wooden Oven Peel, 22"x36" no Handle, Russian birch wood	\$37.50
35	SWPEEL-315 - Handle, 3ft Wooden Oven Peel Handle/Pole, Russian birch wood	\$15.65
36	SWPEEL-815 - Handle, 8ft Wooden Oven Peel Handle/Pole, Russian birch wood	\$20.00
Boards		
37	SWBOARD-ADD00133 - Wooden Proofing Board 18"x26", 3/8" Thick, Baltic Birch Wood	\$19.25
38	SWBOARD-00053 - Flipping Board, 27.5"x4" with Inscription: TMB Baking	\$18.00
Blades		
39	SWBLADE-6001390002 - 10 Pack of Razor Blades	\$5.50
40	SWBLADE-6001390001 - Box of Razor Blades, 250 Count	\$50.00
41	SWBLADE-0012 - Blade Holder/Lame- Medium Ball, 4 ½ length x 3/16" thickness	\$7.50
42	SWBLADE-0013 - Blade Holder/Lame- Large Ball , 4 ½ length x ¼" thickness	\$7.50
43	SWBLADE-1092.03.05 - Blade Holder/Lame with Attached Plastic Holder	\$9.00

Condensed Pricing List

Item	Description	Price
Containers		
44	SWCONTAINER-152705 -Traex Bus Tub, Bottom: 17"x12.75" Top: 21.75"x15.5"x7" Deep, 20 lbs. Capacity, Temp Range: -30° to 183°F, High-Density Polyethylene, White, NSF, Made in USA	\$15.00
45	SWCONTAINER-152205 -Traex Bus Tub Lid - Size: 15"x20" Freezer & Dishwasher Safe, High-Density Polyethylene, White, NSF, Made in USA	\$13.50
46	SWCONTAINER-BAC008 - Container for Ingredients, 50 lbs. Flour Capacity, White PP, Height 17 5/8" x 17" Width – Item #: SWCONTAINER-BAC008	\$49.00
47	SWCONTAINER-BAC008CI - Cover for Container Item# SWCONTAINER-BAC008, Ivory, Height 1 1/8" x 17" Width	\$33.00
Linen Couche		
48	SWLINEN-18INCH - Yard of 18" Width Linen/Couche, 100% Woven Flax	\$11.50
49	SWLINEN-26INCH - Yard of 26" Width Linen/Couche, 100% Woven Flax	\$13.50
50	SWLINEN-31INCH - Yard of 31" Width Linen/Couche, 100% Woven Flax	\$14.25
Brushes/Brooms		
51	SWBRUSH-8301 - Flour Broom 12", White Plastic Handle	\$22.00
52	SWBRUSH-8302 - Flour Broom 12", Brown Plastic Handle	\$22.00
53	SWBRUSH-6432 - Brush, 10" with Wooden Handle Table/Counter with Grey Polystyrene Bristle	\$15.00
54	SWBRUSH-403016 - Oven Broom, 16" for Stone Deck Oven, Tampico Bristles	\$48.50
55	SWBRUSH-1565 - Oven Broom, 20", Wooden Head with Natural Bristles (Requires hardware: SWBRUSH-1500)	\$48.00
56	SWBRUSH-403024 - Oven Brick Hearth Broom, 24", Tampico Bristles	\$59.00
57	SWBRUSH-B370 - Deck Oven Brush – 28" Brush Head, 51" Overall	\$45.00
58	SWBRUSH-1500 - Hardware for 20" Oven Broom (Item #SWBRUSH-1565). Opening of 1" Diameter for Wooden Handle	\$15.00
59	SWBRUSH-WFR065 - Metal Threading for Broom Handle, Replacement for WS612	\$5.00
60	SWBRUSH-WS612 - Telescopic Ext. Pole 6-12 ft., Sherlock	\$48.75
Cutters/Rollers		
61	SWCUTTER-51105 - Croissant/Dough Cutter, 5 Slices, Smooth-Cut, Stainless Steel	\$140.80
62	SWCUTTER-51207 - Croissant/Dough Cutter, 7 Slices, Jagged Cut, Stainless Steel	\$149.00
63	SWROLLER-75002 - Roller, Dough 4.75" Pointed-Edge Docker	\$20.00
64	SWROLLER-75004 - Roller for Making Bear Claw Pastry, Square 2.56"	\$20.00
65	SWROLLER-75005 - Roller, Dough 4.75" Flat Edged for Creating Lattice Designs with Dough	\$20.00

Condensed Pricing List

	Item	Price
Stamps		
66	SWSTAMP-75011 - Roll Stamp, Kaiser, X-Shape, Plastic	\$7.75
67	SWSTAMP-75012 - Roll Stamp, Kaiser, Small Star, Plastic	\$7.75
68	SWSTAMP-75013 - Roll Stamp, Kaiser, Small Star with Center Hole, Plastic	\$7.75
69	SWSTAMP-75014 - Roll Stamp, Kaiser, Large Star, Plastic	\$13.00

Miscellaneous		
70	SWCONTAINER-BAC011 - Trolley for Item# SWCONTAINER-BAC008, 19"L x 14 5/8"W x 5 1/8"H	\$87.00
71	SWGLOVE – SASA High Temp Leather Oven Gloves with Forearm Protection	\$49.00
72	RACK-WHITEFRC-1 - Rack Cover, STD White Freezer Window, Plastic 10 Ounce Material, Size: 28x22x64 inches	\$125.00
73	RACK-DFRC-1 - Rack Cover for Double Rack, Size: 30x38x64 inches	\$138.00

TMB Baking Discontinued Items

Once items deplete they will be permanently discontinued

1	SWROLLER-75002 - Roller, Dough 4.75" Pointed-Edge Docker	Limited Stock
2	SWROLLER-75004 - Roller for Making Bear Claw Pastry, Square 2.56"	Limited Stock
3	SWROLLER-75005 - Roller, Dough 4.75" Flat Edged for Creating Lattice Designs with Dough	Limited Stock
4	SWSTAMP-75011 - Roll Stamp, Kaiser, X-Shape, Plastic	Limited Stock
5	SWSTAMP-75012 - Roll Stamp, Kaiser, Small Star, Plastic	Limited Stock
6	SWSTAMP-75013 - Roll Stamp, Kaiser, Small Star with Center Hole, Plastic	Limited Stock
7	SWSTAMP-75014 - Roll Stamp, Kaiser, Large Star, Plastic	Limited Stock
8	SWBASKET-AO200140 - Oval Coiled Wicker Proofing Basket, ID: 7 7/8"L x 5 1/2"W (OD: 8 5/8"L x 6 1/4"W), 1lb. Dough Capacity	Stock Available
10	SWBASKET-AOK210150 - Oval Plastic Proofing Basket, ID: 8 3/8"L x 6"W (OD: 8 3/4"L x 6 3/8"W) with Air Circulation, 1 lb. Dough Capacity	Stock Available
11	SWBASKET-CB105937 - Oval Wooden Basket (GLC), Flat Base, ID: 9 1/2"L x 4 3/4" W (OD: 10 1/4"L x 5 3/8" W), 1.5 lbs. Dough Capacity	Stock Available
12	SWBASKET-TM707 - Linen Lined Couronne Basket, ID: 11.50" (OD: 13") Diameter x 4"H, Crown Diameter x 3" 1.5-2 lbs. Dough Capacity	Limited Stock

RETURN POLICY

All claims on damages or shortages must be made upon receipt of goods

Returns are subject to 20% restocking fee

Restocking fee will be waived for exchange orders

Items must be unused

Returns accepted within 30 days with a RMA

No credit will apply for the original shipping & handling

Customer is responsible for return shipping cost