

Rub A  
Dub Dub



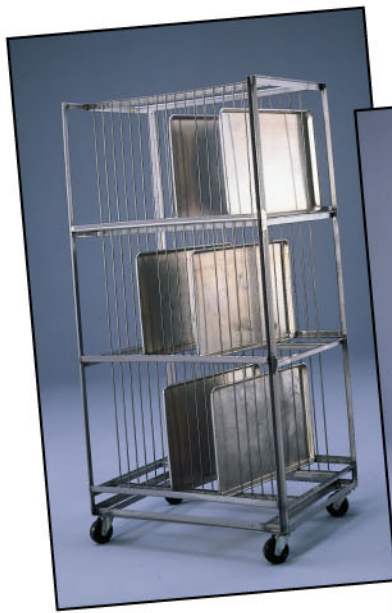
## Powerful, Efficient and Economical To Operate

### Model RW 1548

The high capacity of the LVO RW1548 makes this pan washer a truly outstanding piece of equipment for high producing bakeries, restaurants or other food operations. A powerful 5 h.p. and 10 h.p. dual pump system on the model delivers a high pressure wash that literally blasts away residue on pots, pans, racks, bowls, grocery carts and utensils leaving them positively clean and completely sanitized.

The LVO RW1548 is fully automatic, easy to install and economical to operate. It can be operated easily by any employee. The RW1548 is made of 12 and 14 gauge stainless steel and is designed to last for years. It can substantially reduce your labor costs and in many cases it will pay for itself in one year with the savings.





**Bun Pan Rack**



**Cake Pan Rack**

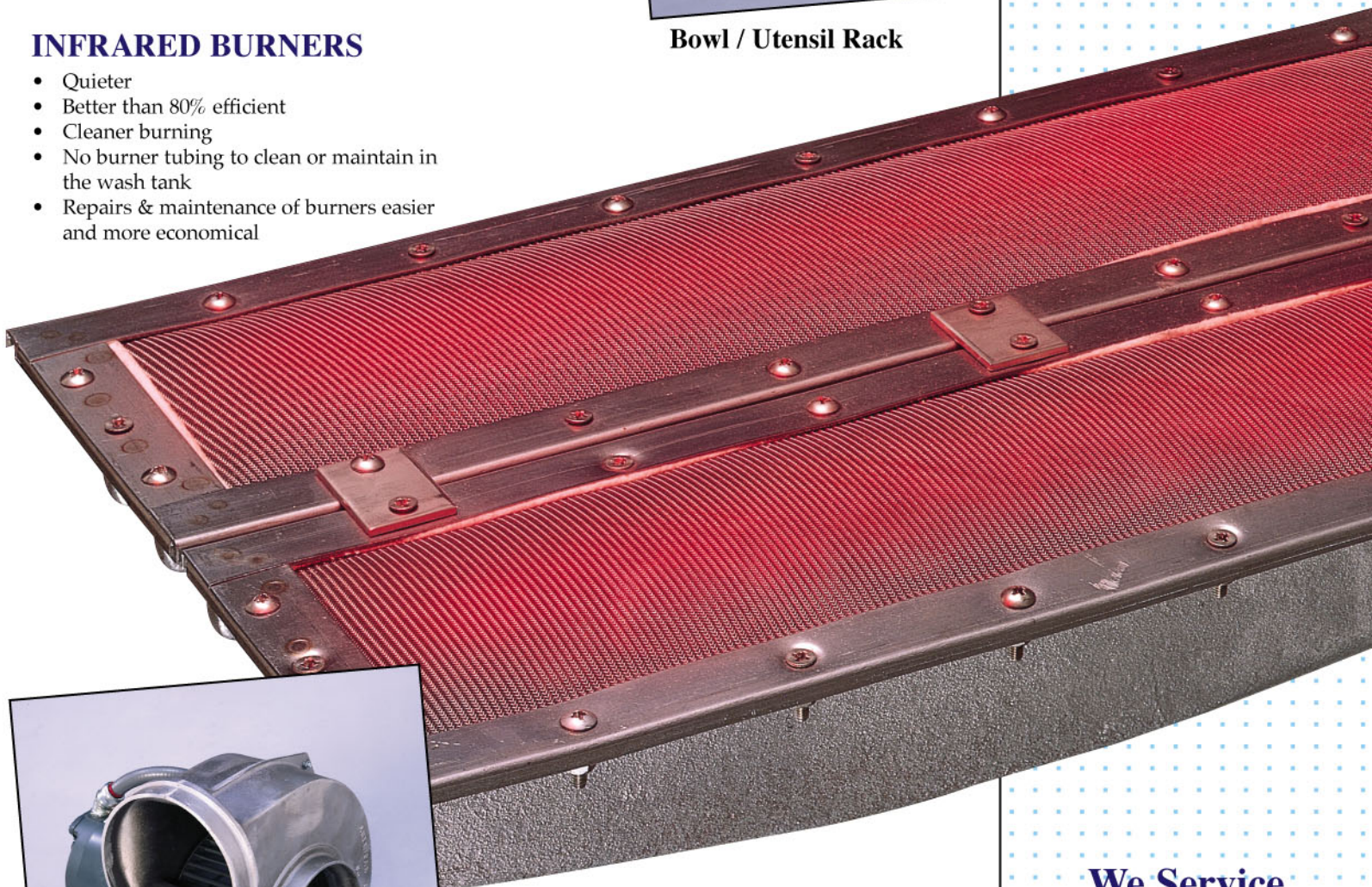


**Bowl / Utensil Rack**

## High-Volume Pot & Pan Washer

### INFRARED BURNERS

- Quieter
- Better than 80% efficient
- Cleaner burning
- No burner tubing to clean or maintain in the wash tank
- Repairs & maintenance of burners easier and more economical



### POWER VENTING

Remove steam from your washer quickly and efficiently before it enters your work area. The 700 CFM American Fan is sure to work for you.

**We Service  
What We Sell!**

# SPECIFICATIONS

**Wash Cap:** 48 pans

**Pump:** 1-5 H.P. & 1-10 H.P.  
208, 230, 460V, 60 cycle  
3 phase- recirculates app.  
250 G.P.M.

**Timers:** Wash, delay, rinse -  
all adjustable

**Electrical Components:**  
U.L. approved

**Wash Tank:** 65 gal. cap. -  
electric, steam, or gas

**Construction:** 12 and 14  
G.A. Stainless Steel

**Rinse Tank:** S.S. with two 9  
KW electric booster heater  
to boost 120° water to 180°-  
195° sanitizing rinse water.

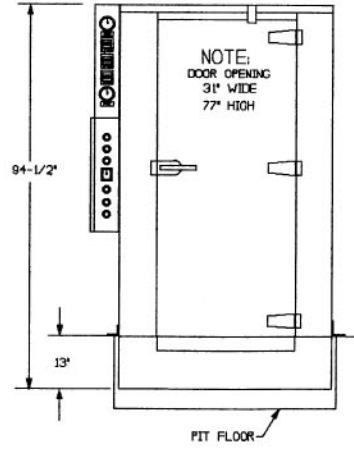
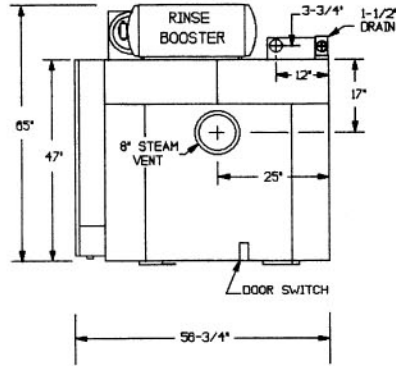
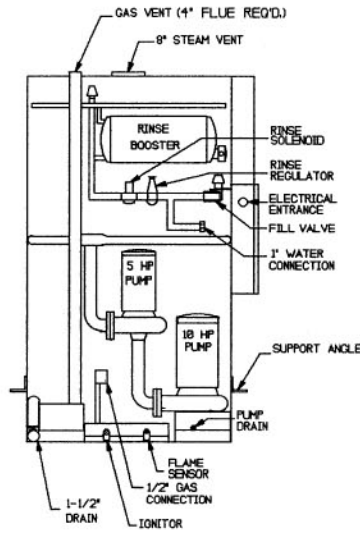
**NOTE:**

Recommended  
Clearances

Top	36"
Front	36"
Sides	16"
Rear	12"
Bottom	6" *

\*Gas machines must be installed  
with 6" adjustable legs when  
placed on a combustible floor.

**We Service  
What We Sell!**



## RW1548 Gas

### Total Amperage

	208V	230V	460V
Electric	133.1	122.3	62.1
Gas or Steam Injected	95.6	88.4	45.2
Recirculating Steam	45.6	43.2	22.6

Gas Rating 66,000 BTU

Injected Steam Rating- 37 lbs @ 10 to 15 psi

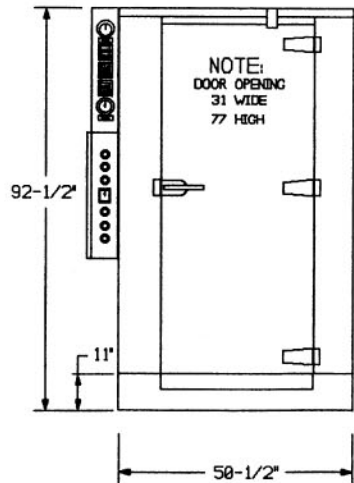
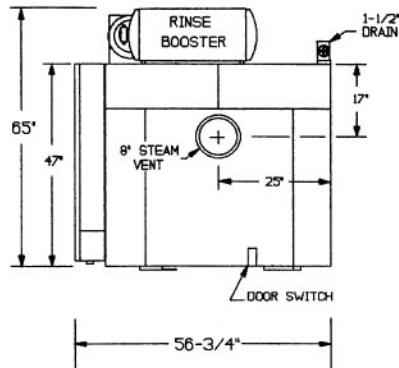
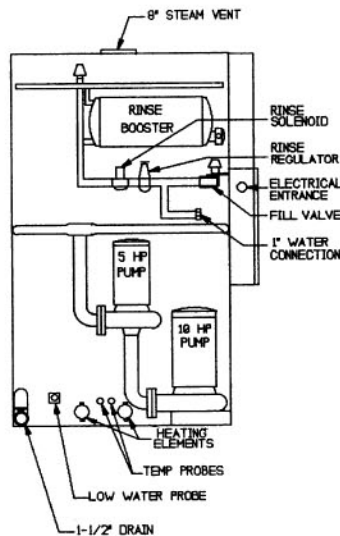
Recirculating Steam - 76 lbs @ 10 to 15 psi

Rinse Tank Cap. - 20 gal.

60 sec. rinse @ 20 psi

14 gal/cycle

## RW1548 Electric



## LVO MANUFACTURING INC.

P.O. Box 188, 808 N 2nd Avenue E  
Rock Rapids Iowa 51246  
Phone: 712/472-3734 or 712/472-3735  
Toll Free 1-800-346-5749  
Fax 712-472-2203

