

BATCH COOLING WATER CHILLERS FOR BAKERY APPLICATIONS



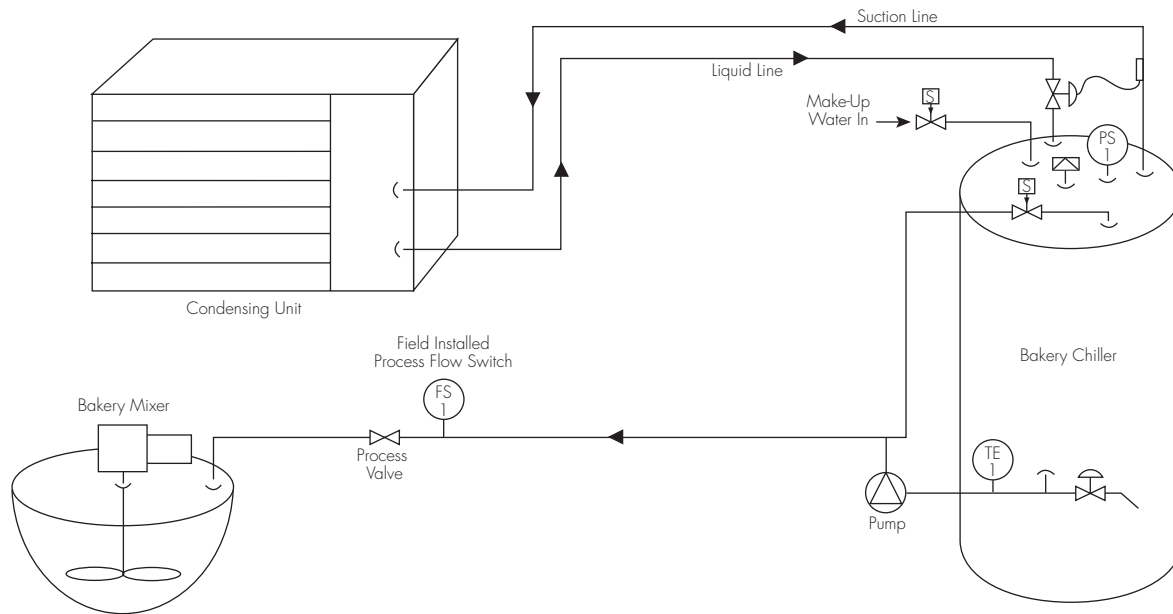
**PROVIDING AUTOMATIC WATER TEMPERATURE CONTROL
FOR THE MODERN BAKING INDUSTRY.**

STANDARD FEATURES:

- ▲ Outlet temperatures down to 36°F.
- ▲ For up to 70 gallons of chilled water per hour.
- ▲ 50- and 120-gallon storage capacities available.
- ▲ Batch draw-off flow rates from 5 to 18 gallons per minute.
- ▲ Inlet temperatures up to 80°F.
- ▲ Process/recirculation pump standard.
- ▲ Remote condensing units or rack systems.
- ▲ Adjustable digital temperature control with °F or °C display.
- ▲ ETL listed.

MUELLER®
REFRIGERATION PRODUCTS

TYPICAL SYSTEM LAYOUT/PIPING DRAWING



TECHNICAL SPECIFICATIONS

Model No.	GPH ¹	Lbs. Per Hour	Storage Capacity (gal)	Draw-Off Flow Rate (gpm)	Condensing Unit Type	Condensing Unit HP	Electrical Data	Est. Shipping Weight (lbs)	Est. Dimensions L x W x H (in)
PMC 40/50-RC	40	334	50 gallon	14	Remote ²	2	208-230/60/1	Skid-310	32 x 24 x 72
								CU-140	24 x 19 x 17
PMC 40/50-RS	40	334	50 gallon	14	None	—	208-230/60/1	310	32 x 24 x 72
PMC 70/120-RC	70	584	120 gallon	18	Outdoor	3.5	208-230/60/1	Skid-710	42 x 34 x 84
								CU-360	40 x 31 x 32
PMC 70/120-RS	70	584	120 gallon	18	None	—	208-230/60/1	710	42 x 34 x 84

¹GPH capacities are based on a minimum water refill rate of at least 8 gpm, and on drawing evenly sized and spaced batches each hour.

²The 2.0 hp remote condensing unit is suitable for outdoor operation with the addition of low-ambient controls and weather protection. Call the factory for more information.

PERFORMANCE SPECIFICATIONS

Inlet Temp.	Model No.	
	40/50 (gph*/storage)	70/120 (gph*/storage)
60°F	36°F	36°F
70°F	38°F	36°F

*GPH capacities are based on a minimum water refill rate of at least 8 gpm, and on drawing evenly sized and spaced batches each hour.

MUELLER®

P.O. Box 828 • Springfield, Missouri 65801-0828, U.S.A.

Phone: (417) 831-3000 • 1-800-MUELLER • Fax: 1-800-436-2466 • www.muel.com • E-mail: refrigeration@muel.com

International Inquiries - Fax: (417) 831-6906 • E-mail: international@muel.com

©1999-2004 Paul Mueller Company



CR-1268-3